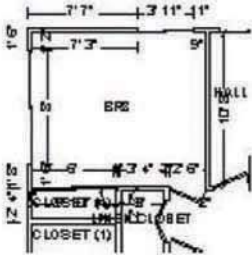


# Sample Scope of Loss

## Main Level

### Room: Bedroom 3



362.32	SF Walls	139.67	SF Ceiling
501.99	SF Walls & Ceiling	139.67	SF Floor
15.52	SY Flooring	49.25	LF Floor Perimeter
61.00	LF Ceil Perimeter		

DESCRIPTION	QNTY	REMOVE	REPLACE	TOTAL
Blown-in insulation - 12" depth - R38	139.67 SF	0.00	0.81	113.13
Two coat plaster over 1/2" gypsum lath - button board	501.99 SF	0.00	3.14	1,576.25
Seal then paint the walls twice (3 coats)	362.32 SF	0.00	0.69	250.00
Seal/prime the ceiling - one coat	139.67 SF	0.00	0.26	36.31
Acoustic ceiling (popcorn) texture	139.67 SF	0.00	0.54	75.42
Baseboard - 2 1/4"	49.25 LF	0.00	1.05	51.71
Paint baseboard - two coats	49.25 LF	0.00	0.72	35.46
Oak flooring - select grade - no finish	139.67 SF	0.00	6.83	953.92
Sand, stain, and finish wood floor	139.67 SF	0.00	3.06	427.38
Ceiling fan & light - High grade	1.00 EA	0.00	255.97	255.97
Interior door unit	1.00 EA	0.00	112.69	112.69
Door lockset - interior	1.00 EA	0.00	30.43	30.43
Access - face frame & doors for built in closet - High grade	48.00 SF	0.00	34.97	1,678.56
Paint cabinetry - full height - faces only	6.00 LF	0.00	8.86	53.16
Paint door/window trim & jamb - 2 coats (per side)	2.00 EA	0.00	15.76	31.52
Aluminum window, casement 12-23 sf	3.00 EA	0.00	534.90	1,604.70
<b>Room Totals: Bedroom 3</b>				<b>7,286.61</b>

# Sample Scope of Loss

<b>Recap by Room</b>		
<b>Estimate:</b>		
<b>Area: Main Level</b>		
<b>Bedroom 3</b>	7,286.61	4.40%
<b>Hall Bath</b>	3,834.45	2.31%
<b>Master Bedroom</b>	6,856.90	4.14%
<b>Bedroom 2</b>	5,148.60	3.11%
<b>Hall Closet</b>	1,037.56	0.63%
<b>Linen Closet</b>	1,550.24	0.94%
<b>GARAGE</b>	7,318.39	4.41%
<b>KITCHEN</b>	11,012.84	6.64%
<b>Dining Room</b>	3,276.06	1.98%
<b>HALL</b>	2,496.99	1.51%
<b>Living Room</b>	5,432.11	3.28%
<b>Water Heater Closet</b>	395.76	0.24%
<b>Area Subtotal: Main Level</b>	<b>55,646.51</b>	<b>33.57%</b>
<b>Area: Exterior</b>		
<b>Front Elevation</b>	1,808.46	1.09%
<b>Right Elevation</b>	1,803.41	1.09%
<b>Rear Elevation</b>	2,214.03	1.34%
<b>Left elevation</b>	1,892.87	1.14%
<b>Roof</b>	2,770.47	1.67%
<b>Flatwork</b>	5,646.95	3.41%
<b>Concrete stem walls</b>	2,885.24	1.74%
<b>Area Subtotal: Exterior</b>	<b>19,021.43</b>	<b>11.47%</b>
<b>General Conditions</b>	<b>91,111.71</b>	<b>54.96%</b>
<b>Subtotal of Areas</b>	<b>165,779.65</b>	<b>100.00%</b>
<b>Total</b>	<b>165,779.65</b>	<b>100.00%</b>

# Sample Scope of Loss

<b>Recap By Category</b>			
<b>O&amp;P Items</b>		<b>Total Dollars</b>	<b>%</b>
APPLIANCES		2,800.00	1.40%
AWNINGS & PATIO COVERS		213.40	0.11%
CABINETRY		4,293.55	2.14%
CLEANING		4,456.21	2.22%
CONCRETE		9,013.95	4.49%
GENERAL DEMOLITION		1,851.38	0.92%
DOORS		2,684.78	1.34%
DRYWALL		1,352.75	0.67%
ELECTRICAL		3,960.98	1.97%
EXCAVATION		3,457.05	1.72%
FLOOR COVERING - CERAMIC TILE		787.53	0.39%
FLOOR COVERING - VINYL		640.71	0.32%
FLOOR COVERING - WOOD		7,967.35	3.97%
FINISH CARPENTRY / TRIMWORK		5,295.54	2.64%
FINISH HARDWARE		556.85	0.28%
FRAMING & ROUGH CARPENTRY		23,328.64	11.63%
HEAT, VENT & AIR CONDITIONING		2,690.95	1.34%
INSULATION		831.41	0.41%
LABOR ONLY		25,879.20	12.90%
LIGHT FIXTURES		1,279.85	0.64%
MASONRY		1,294.00	0.65%
INTERIOR LATH & PLASTER		12,539.16	6.25%
PLUMBING		5,576.34	2.78%
PAINTING		4,750.98	2.37%
ROOFING		2,770.47	1.38%
SIDING		238.08	0.12%
SPECIALTY ITEMS		5,036.52	2.51%
STUCCO & EXTERIOR PLASTER		5,270.12	2.63%
TILE		847.23	0.42%
TEMPORARY REPAIRS		2,679.25	1.34%
WINDOWS - ALUMINUM		5,903.32	2.94%
WALLPAPER		37.10	0.02%
<b>Subtotal</b>		<b>150,284.65</b>	<b>74.92%</b>
Material Sales Tax	@ 7.750%	3,970.89	1.98%
Overhead	@ 10.00%	15,425.55	7.69%
Profit	@ 10.00%	15,425.55	7.69%

<b>O&amp;P Items Subtotal</b>	<b>185,106.64</b>	<b>92.28%</b>
<b>Non-O&amp;P Items</b>	<b>Total Dollars</b>	<b>%</b>
<b>GENERAL DEMOLITION</b>	<b>6,720.00</b>	<b>3.35%</b>
<b>PERMITS AND FEES</b>	<b>8,775.00</b>	<b>4.37%</b>
<b>Non-O&amp;P Items Subtotal</b>	<b>15,495.00</b>	<b>7.72%</b>
<b>O&amp;P Items Subtotal</b>	<b>185,106.64</b>	<b>92.28%</b>
<b>Grand Total</b>	<b>200,601.64</b>	